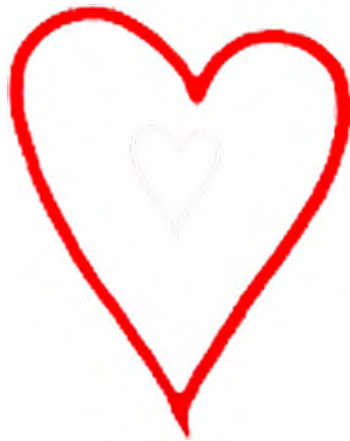


Hello.

We're artrep and we love art.

We hand paint oil reproductions and portraits, just for you.



Masterpieces Painted For You!
Artrep



our story.

artREP was pioneered up by an enterprising Cambridge University graduate with a passion for art.

With a desire to reject the 'status' label tagged on professional hand-painted art, we set out to paint reproductions and portraits of quality, durability and value. We believe that this is an evolution in luxury. Our paintings, hand-painted by artists with years of expertise and experience, represent this evolution.

We spend a great deal of time with each painting, ensuring the most qualified of our thirty-artist strong team works on the project to create an exclusive and special masterpiece.

We combine our knowledge and understanding of art with our client's personal attitude and imagination to create a unique piece of art that has been tailored to our client's specific needs. Whether this be changing the colour of the background to match the colour of our client's new curtains, or changing subtle details on a masterpiece to change the mood; our aim is to paint masterpieces, just for you!

our art.

Art is our passion and we specialise in creating reproductions and portraits of quality, beauty and value.

We are confident that we can reproduce any painting our customers choose; including those which demand a photo-realistic finish (although still created by hand) and those which that need dense texture, such as impressionist pieces.

We have more than twenty experienced and qualified artists, each with a particular speciality. This allows us to create a range of **high-quality Masterpieces**, each with different styles and subjects. We treat each project as individual and ensure that only the most suited artist creates your Masterpiece.

We strive to provide you with museum-quality pieces of art. Keeping this in mind, we carefully select the materials used in creating each of our masterpieces.

We prefer working with painting materials from **Winsor & Newton** and **Grumbacher**. Their oils, considered amongst the highest quality available, have a high amount of colour pigment and few additives. This ensures unparalleled quality and durability. Cheaper, more readily available, materials differ as they use fewer colour pigments in the manufacturing of the paint. The pigments that are taken out are replaced with neutral extenders, which reduces the tinting strength, opacity and colour variety of the oils. Additionally, these oils are less likely to be subject to moisture damage - meaning they should not flake or fade over time.

In addition, we use a heavy woven canvas as a medium for the painting. The high-grade canvas is more durable than the cheaper, more readily available equivalents, and is less likely to rip or damage.

Together, this means the painting looks great, for longer!

www.artrep.co.uk
[/iamtherevolutioninart](http://iamtherevolutioninart)

our service.

We provide a range of high-quality reproductions and portraits, tailored to match each customer's emotion and imagination.

Whilst our popular pieces include works by **Klimt, Modigliani, Botero, Van Gogh, Monet, Dali and Rothko**, we can produce a number of masterpieces ranging from charged pieces by **Raphael** to the minimalist works of **Warhol**.

Retail prices of these reproduction art works normally range from £99 — £224, dependent on the size of the painting. The price is inclusive of any tailoring. Additionally, pieces can be stretched/mounted onto a frame by our studio.

As all our pieces are hand-painted, customers should expect three-four weeks for delivery of their masterpiece.

our customers.

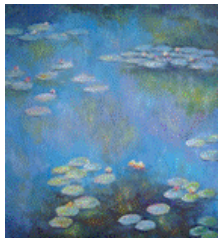
Our clients have recently said the following regarding their new masterpieces;



"The artwork is great - thank you.... I would rank you 5 on all counts. The delivery was made in good time also" JD, London



"I was so pleased with my painting from artrep. The vibrant colors and rich subject definition makes it simply stunning. It is a beautiful addition to my home." SM, Manchester



"Greetings from Florida. My parents received the painting today. It is really terrific and they loved it. Please tell everyone involved that it was a big hit.



"Thanks for your wonderful work. Yes please pass along my gratitude. I just can't express how pleased I am. He does beautiful work. Thanks to all of you." TO, Essex



our business partners.

We are proud to work with a variety of wholesale and retail partners who love art as much as us!

Trade customers will have a dedicated account manager, who will work directly with you to find fresh painting ideas and to explore different ways to match the painting style with the ambience that you hope to create.

You can get more information regarding on how artREP can work with your business by emailing, partners@artrep.co.uk

Retailers and Galleries

We often work with retailers and galleries to provide reproductions and customised art of various styles. We prefer to quote on orders on a case by case basis instead of offering “one size fits all” pricing, as volume, sizes and type of painting may factor into the cost – a Rembrandt will be more expensive than a simple floral painting, for example.

Restaurants / Hotels

We can also handle projects of various size for restaurants / hotels. We work directly with you to ensure your choice of paintings match the ambience and mood that you wish your restaurant / hotel to exhibit.

We also work with interior designers and photographers.

You can get more information regarding on how artREP can work with your business by emailing, partners@artrep.co.uk

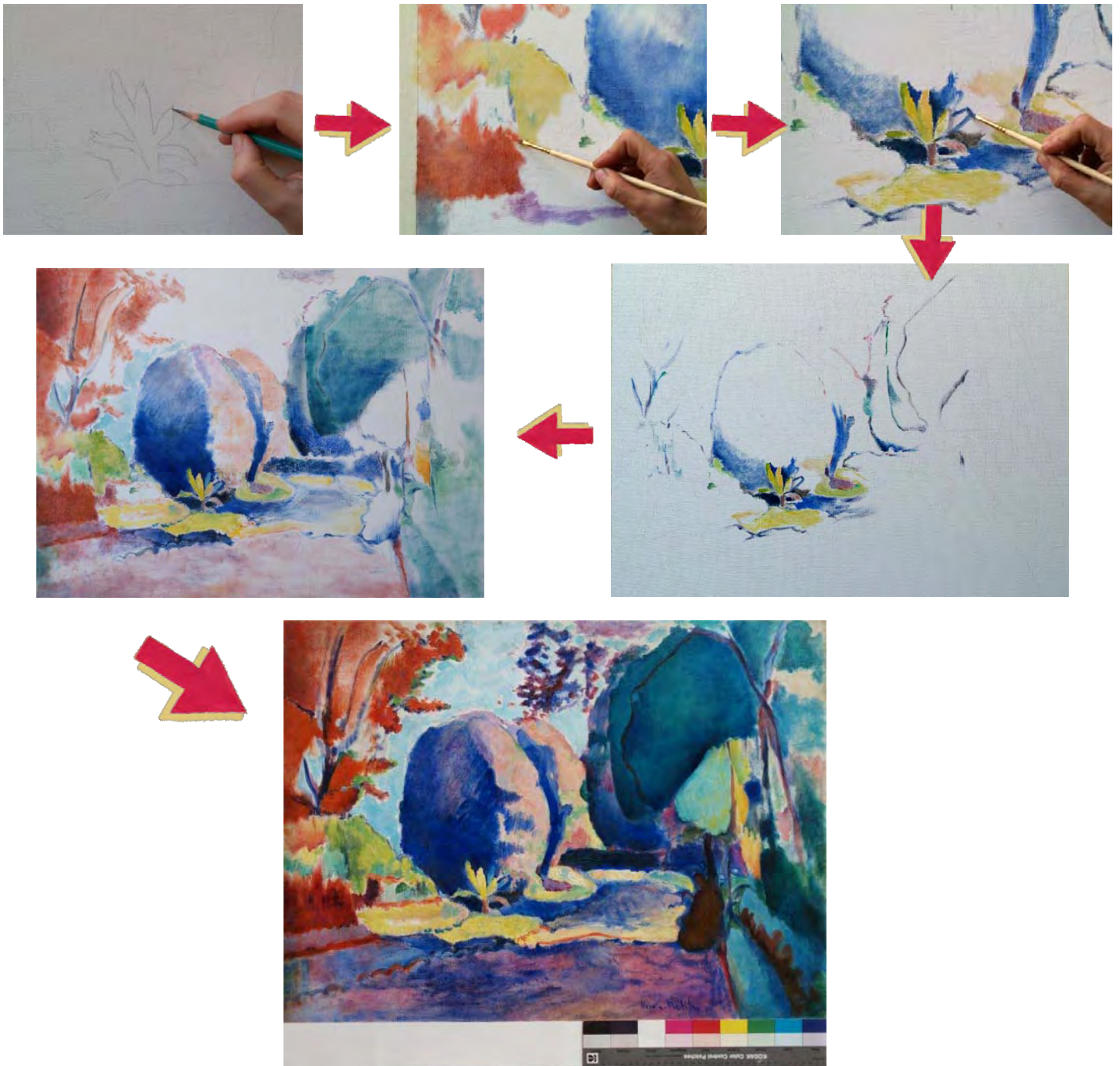
our art work: examples

Reproduction of Vincent van Gogh's 'Cafe Terrace on the Place du Forum'



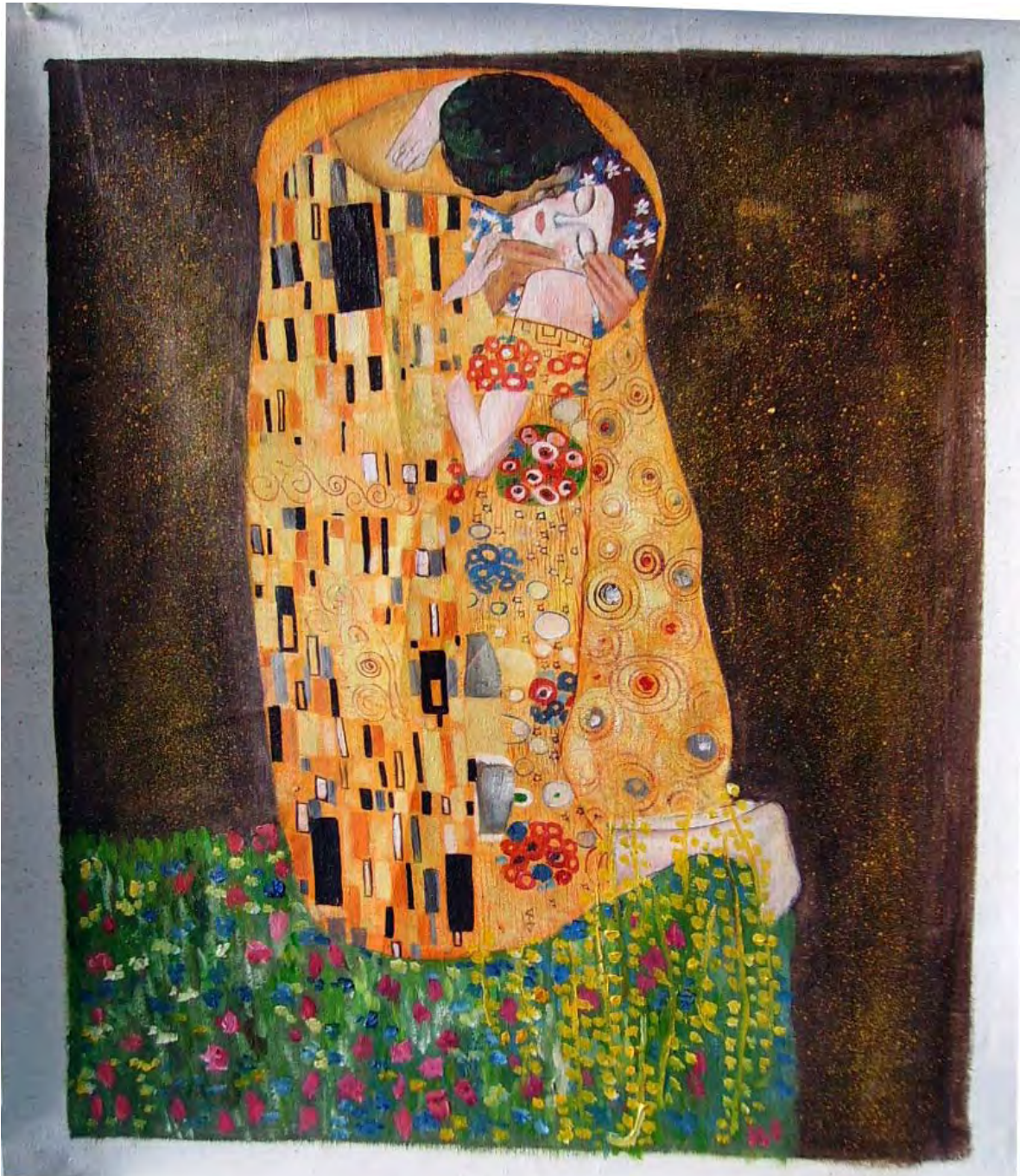
our art work: examples

Reproduction of Henri Matisse's 'Garden of Luxemburg'



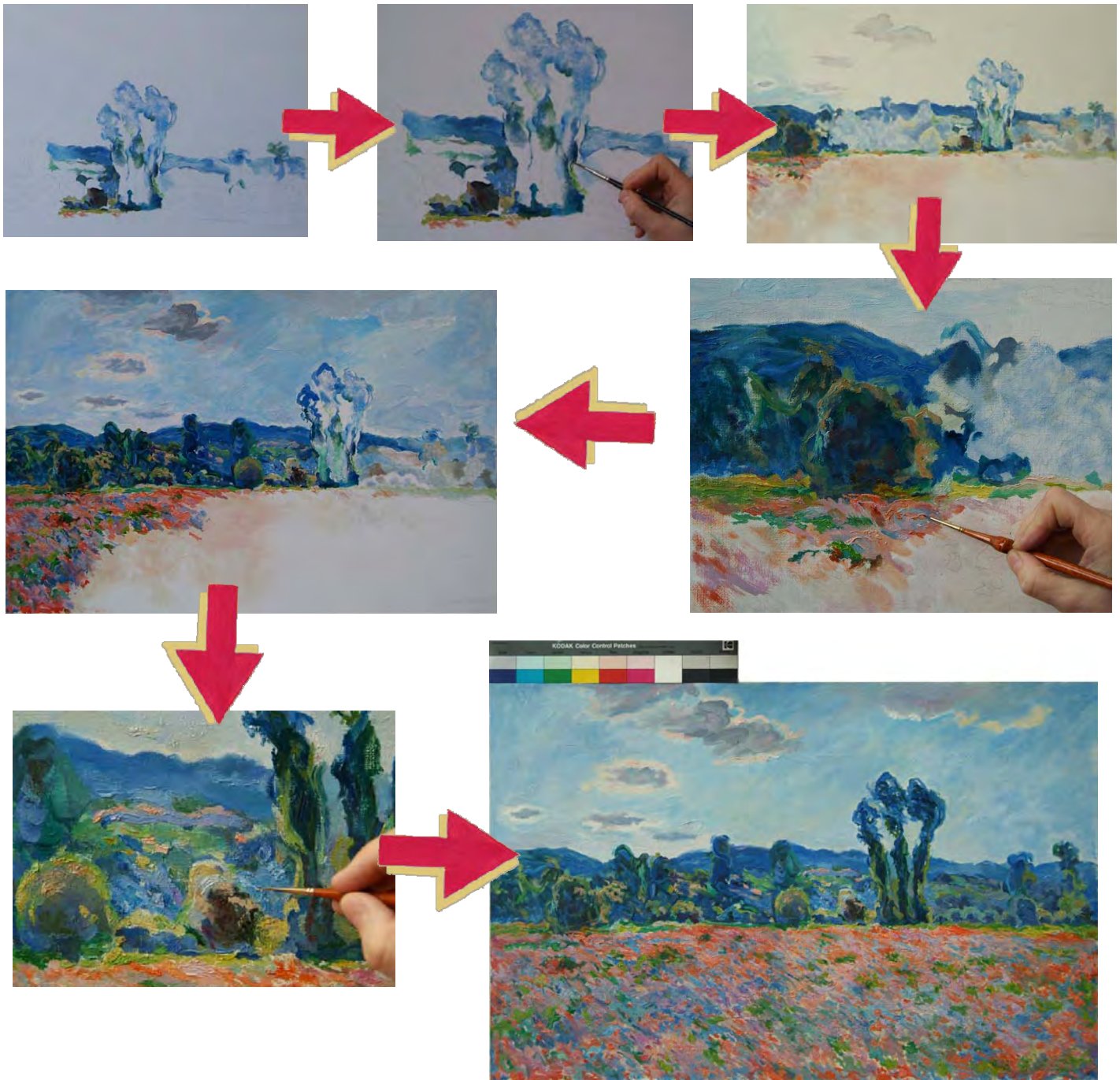
our art work: examples

Reproduction of Gustav Klimt's 'The Kiss'



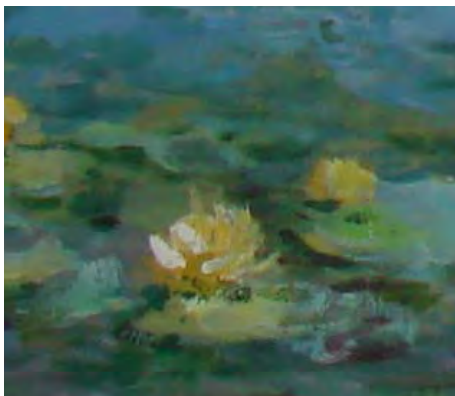
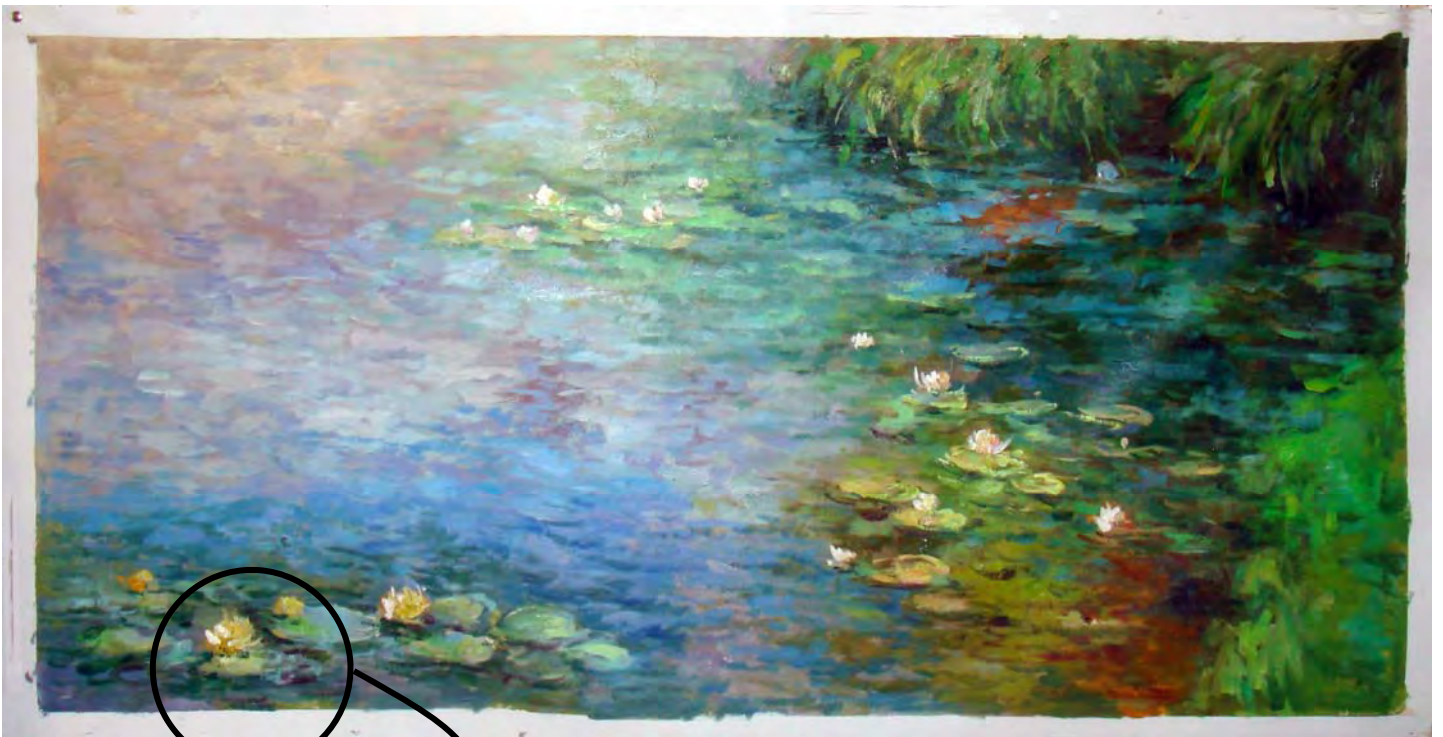
our art work: examples

Reproduction of Monet's 'Poppies'



our art work: examples

Reproduction of Claude Monet's 'Water Lilies (The Clouds)'

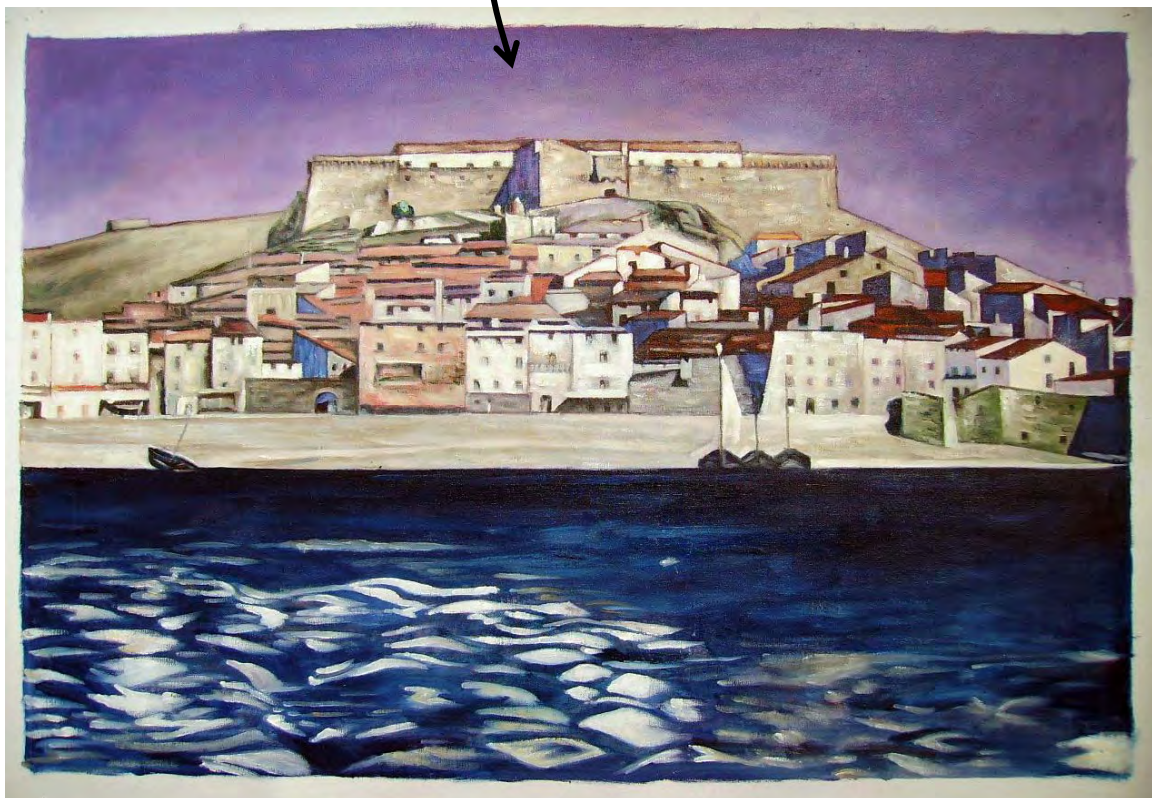


Reproducing art is a complicated yet fascinating job. In the case of Monet's Water Lilies, it is important to follow the same order and procedure of work as the original painter.

We first draw the whole picture, right down to the smallest details, in brown oils and white. Then, we begin applying paint in a sequence that matches how it was applied on the original and watch the Masterpiece come to life!

our art work: examples

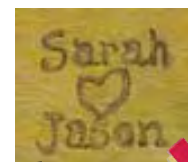
Reproduction of Charles Mackintosh's 'Collioure'



We customised this Masterpiece by matching the purple tones in the background with the purple tones from our customer's new curtains!

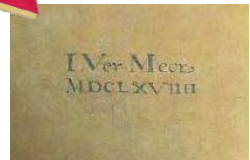
our art work: examples

Reproduction of Jan Vermeer's 'Geographer'



Customised as per client's needs

Original



Looking for a unique anniversary gift, our client chose to customise her masterpiece by having painted her and her partner's name in place of text that appeared on the original painting.

The painting became a unique and imaginative addition to her home

our portraits: examples



Our customer wanted a unique gift for her grandfather and chose to commission a portrait through artREP

We completed the piece in time for Christmas, and even knocked a few years off her grandfather's portrait!




what next?

If you would like to hear more about artrep, we would love to hear from you!

Visit our website for more information on the works we offer;
www.artrep.co.uk

Email;
info@artrep.co.uk

 Consider the environment - do you really need to print this document?